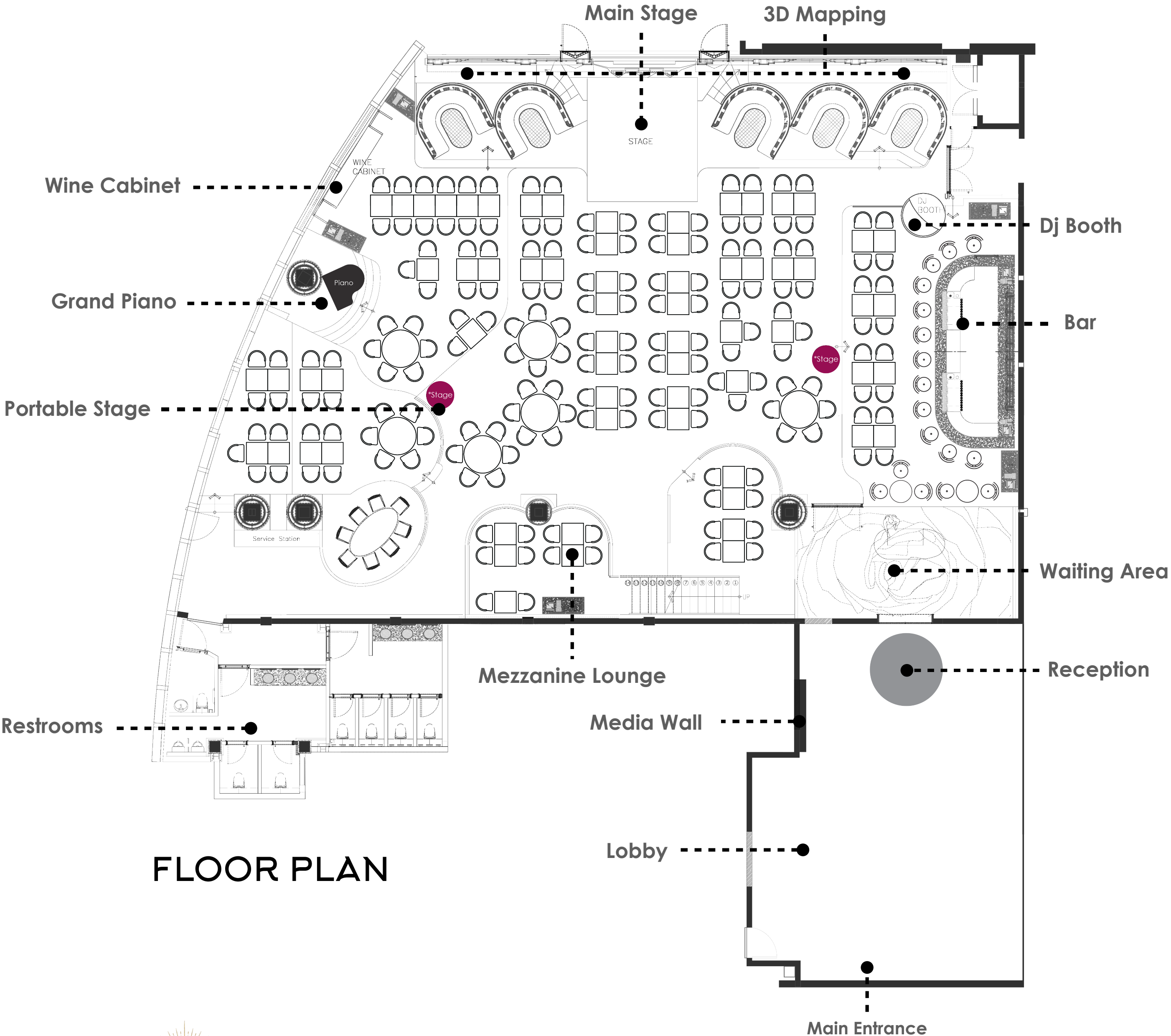


TECHNICAL SPECS

- Dining area : 600 sqm
- Seating Capacity : 230 Seats (including Bar & High Chairs)
- 4 Stages : 1 Main Stage, 2 Portable Stages & Piano Area
- 3D mapping wall : Width 19M x Height 5.2M

FEATURES

- ☑ Private access
- ☑ Valet parking
- ☑ Tailor-made Entertainment
- ☑ Sound & Light Equipment
- ☑ Customized Projection
- ☑ Zoning to fit each type of events

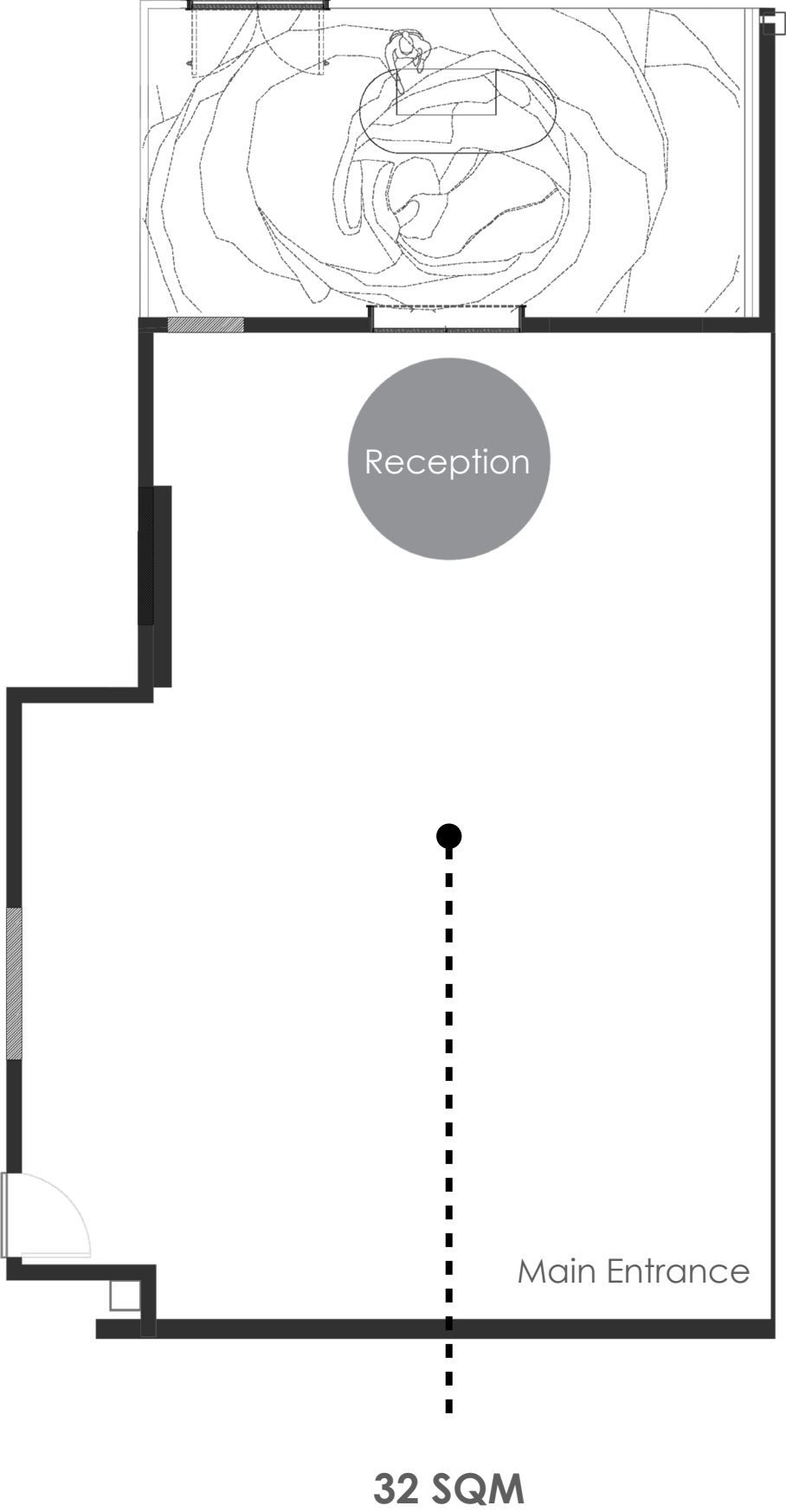


FLOOR PLAN

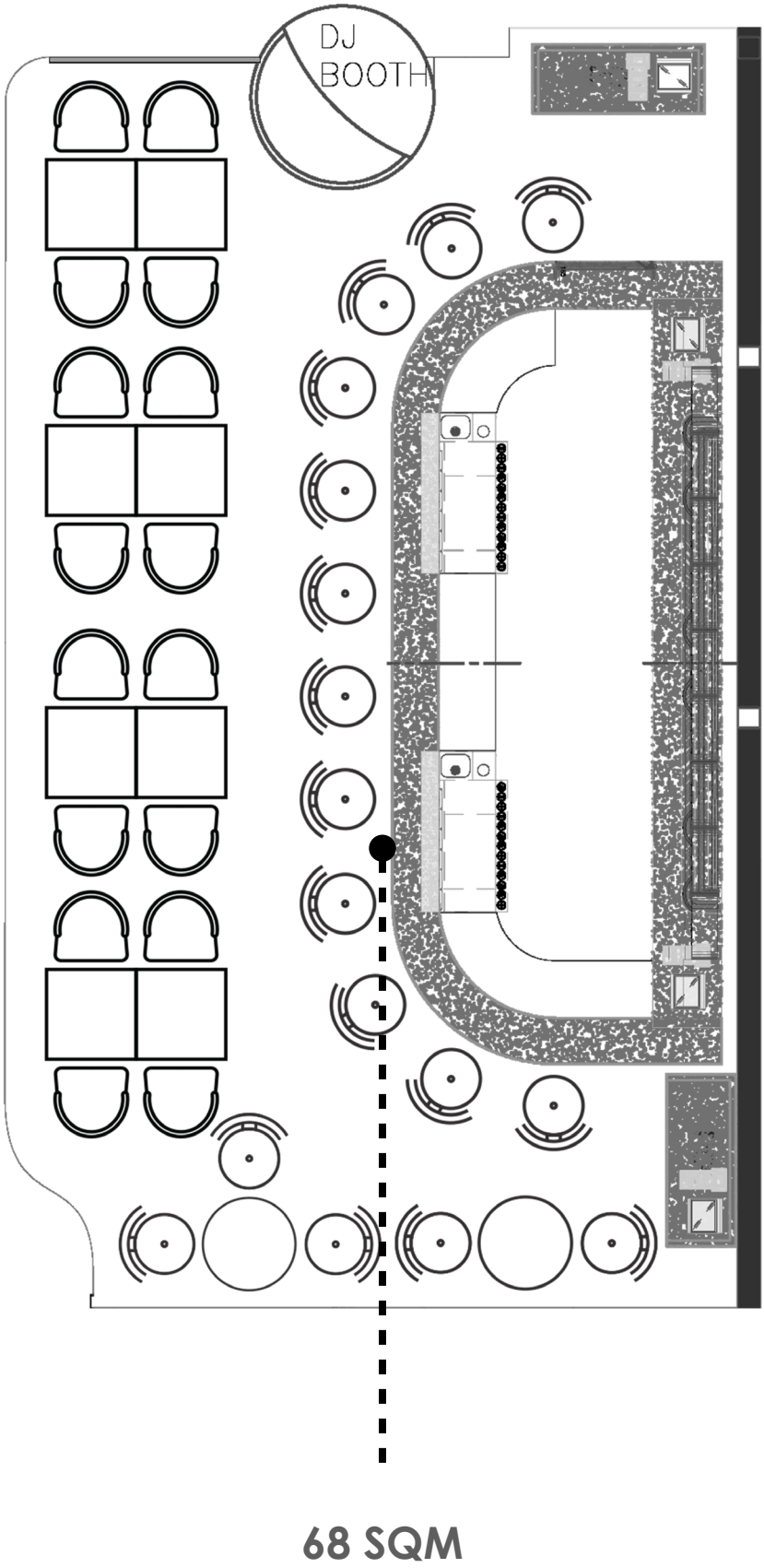
Opportunity to brand at the main entrance
* Media wall available starting from AED 3500



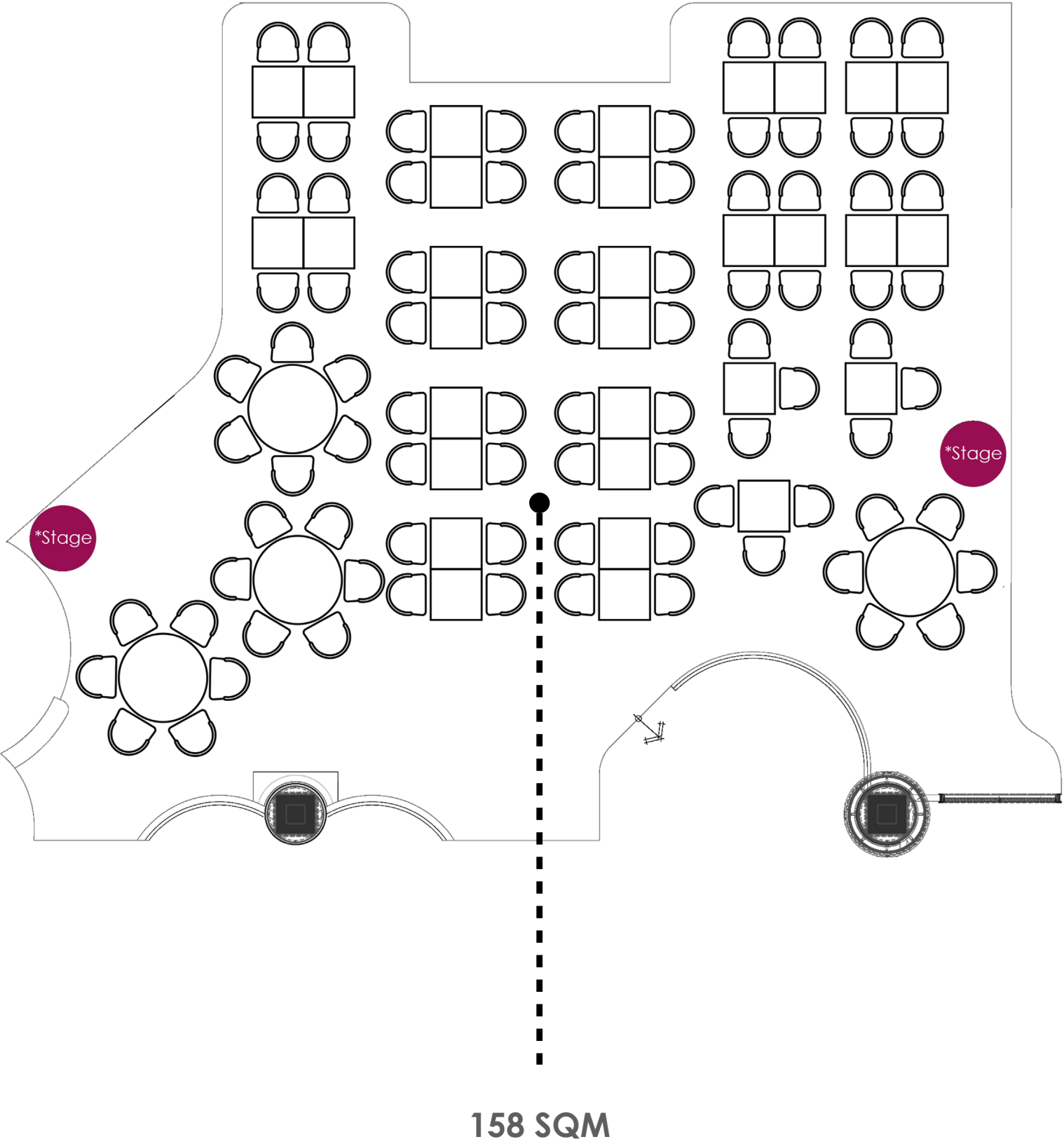
WELCOMING AREA



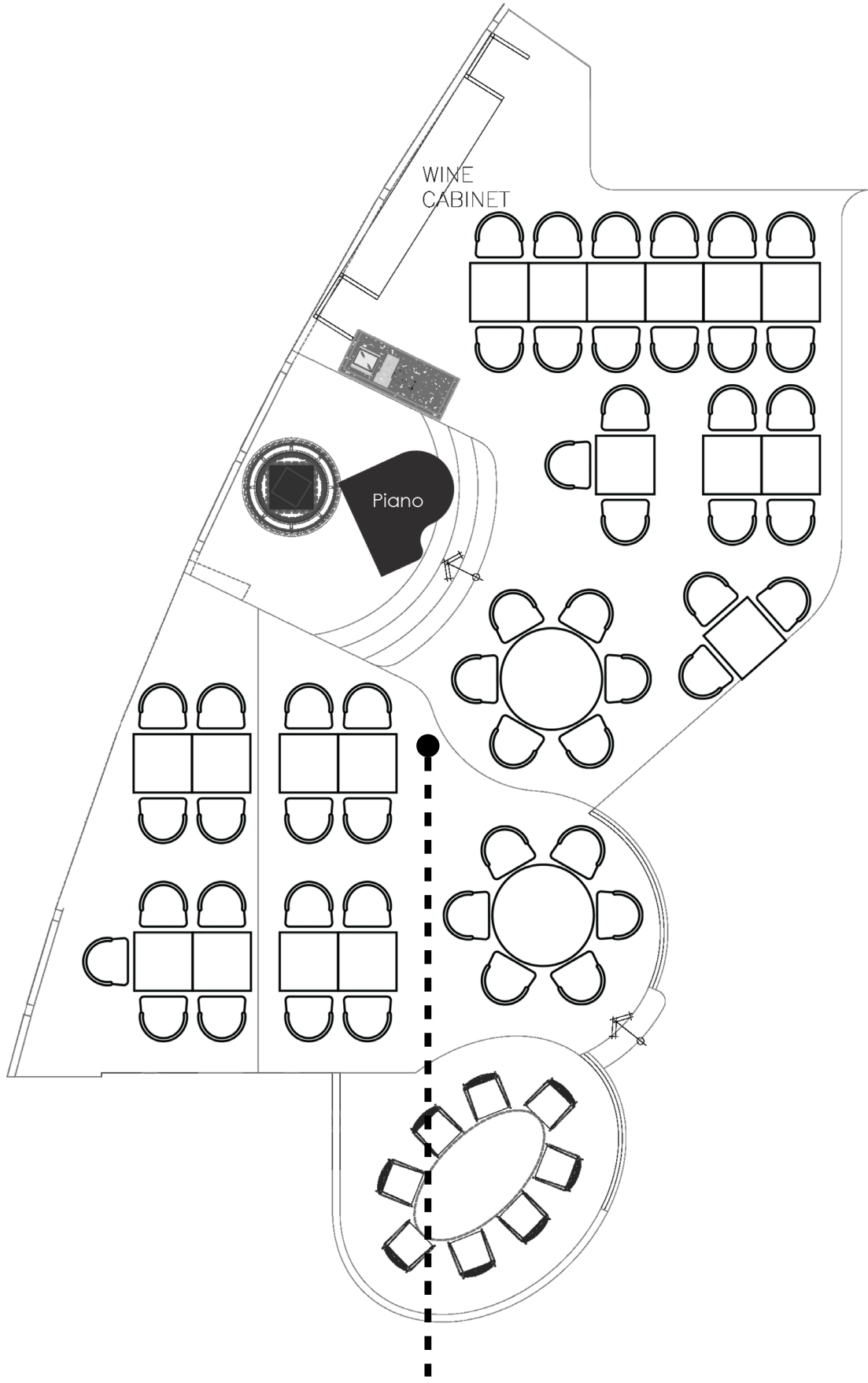
BAR AREA



MAIN FLOOR

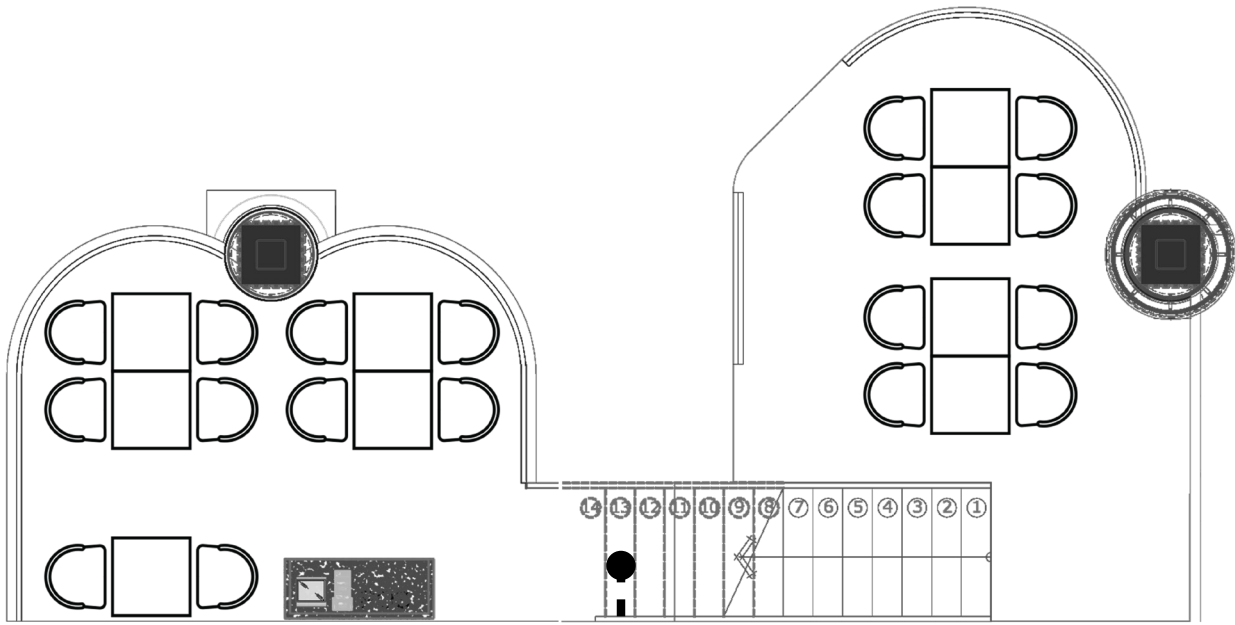


PIANO VIEW AREA



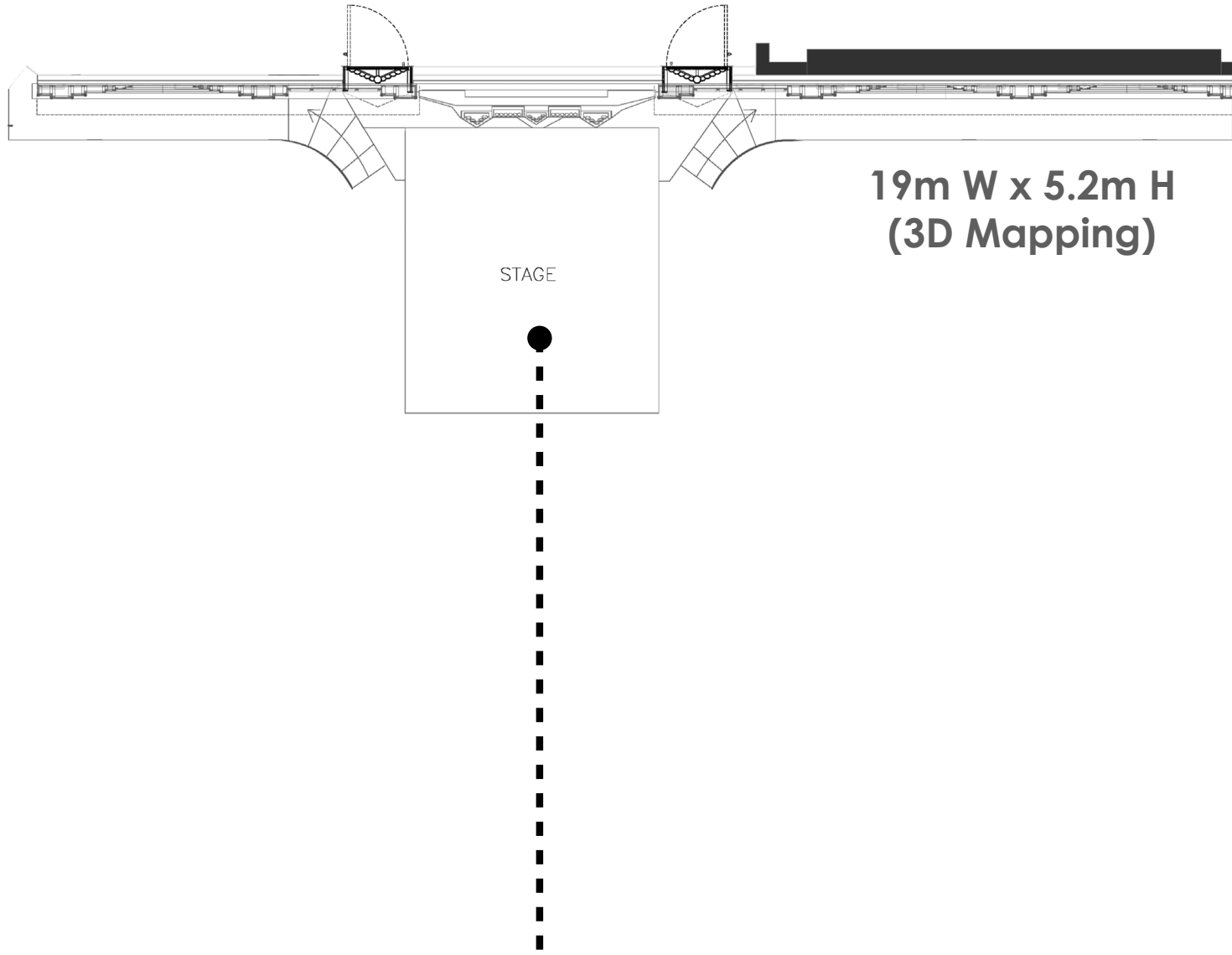
105 SQM

MEZZANINE & UPPER BAR SIDE



47 SQM

STAGE & 3D MAPPING



32 SQM (Stage)

